

Creating a firewall exception for the Tekron Configuration Software

Firewall software running on your PC can block the Configuration Software from communicating with your network, causing it to be unable to discover or connect to Clocks. To resolve the problem, the Configuration Software must be allowed access through the firewall by adding a firewall exception.

The following procedure outlines how to create a firewall exception in Windows Firewall on Windows 7. The following procedure is provided as a guide only, as the required steps may differ from those described here, depending on your version of Windows.

If your PC is a member of a domain, your Network Administrator may have restricted access to Windows Firewall settings. Refer to your Network Administrator if you are unsure.

If your PC is running third-party firewall software, please refer to the documentation provided by the vendor of that software. Note that UDP ports 9990, 9992, 9997 and 9999 are used for configuration and management.

Procedure:

1. Go to Windows Firewall settings. This can be done by clicking the Start button, then click “Control Panel”, then click “Windows Firewall”. If the “Windows Firewall” option is not visible, first click “System and Security”.
2. In the left sidebar, click the “Allow a program or feature through Windows Firewall” link. Refer to Figure 1.

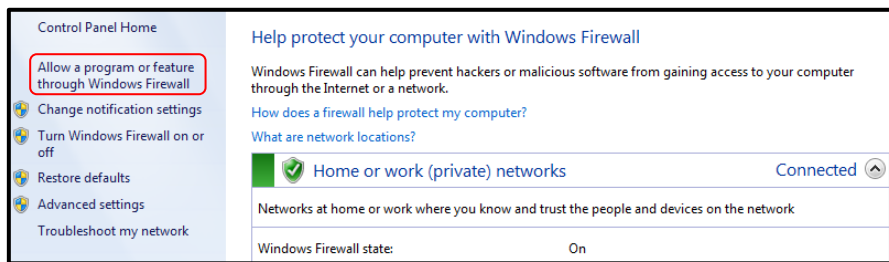


Figure 1 - Allowing a program through Windows Firewall

3. Click the “Change settings” button. Refer to Figure 2.

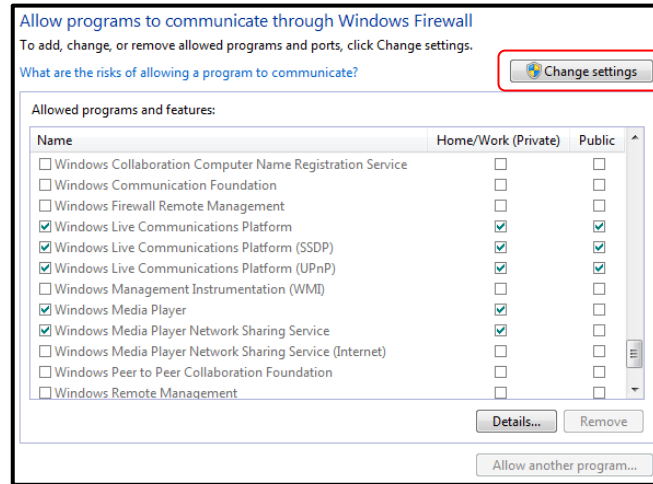


Figure 2 - Enabling firewall settings changes

4. Click the “Allow another program...” button. Refer to Figure 3.

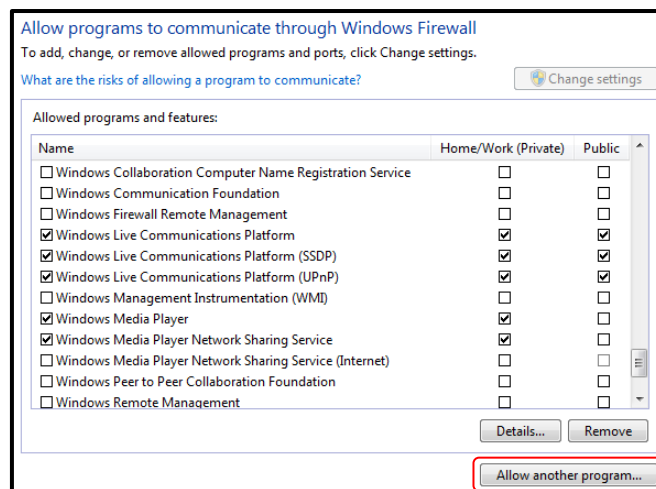


Figure 3 - Adding another program to allowed list

5. Click the “Browse...” button. Refer to Figure 4.

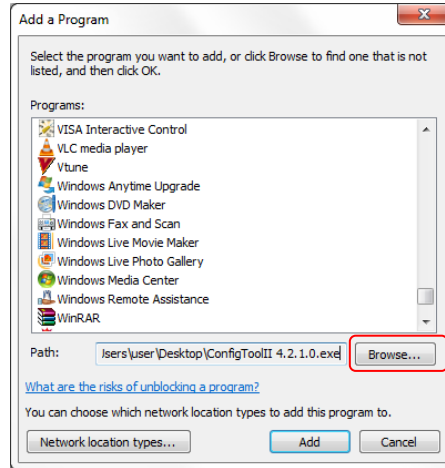


Figure 4 - Browsing for executable to add

6. Browse to the location of the Configuration Tool executable, select it, and click the “Open” button.
7. Click the “Network location types...” button. Refer to Figure 5.

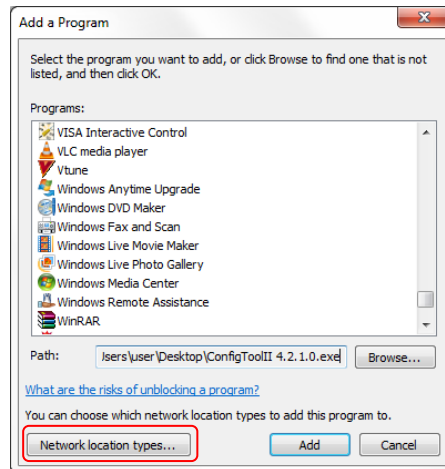


Figure 5 - Choose network location types

- Check all checkboxes next to the Domain (if present), Home/Work, and Public network locations, and click the “OK” button.

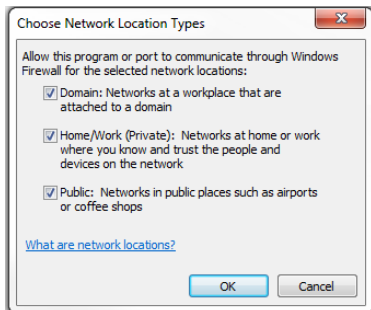


Figure 6 - Selecting network location types (domain network)

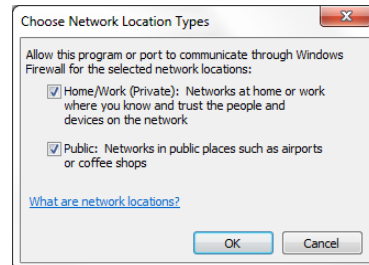


Figure 7 - Selecting network location types (non-domain network)

This is necessary to ensure that the Configuration Software can communicate with a directly connected Clock. Windows will be unable to determine the network type when connected directly to a Clock, and so will use the “Public” network type by default.

- Click the “Add” button. “Tekron Clock Config II” should now appear in the allowed programs list. Refer to Figure 8.

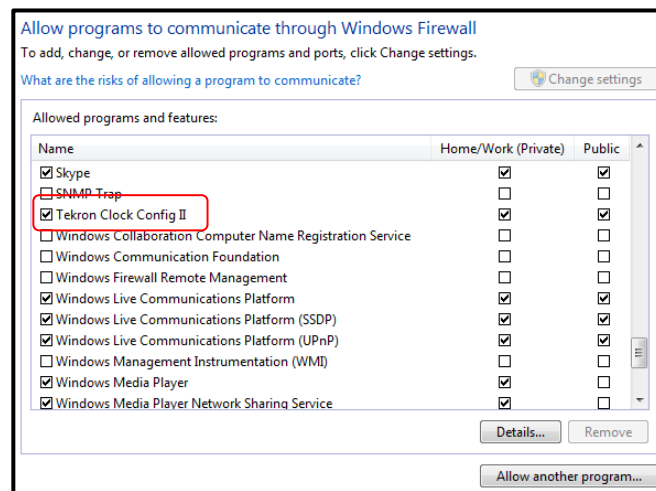


Figure 8 - Configuration software added to allowed programs list

- Click the “OK” button.
- Close the Windows Firewall settings window.

The Configuration Software should now be allowed through the firewall and able to connect to Clocks.